

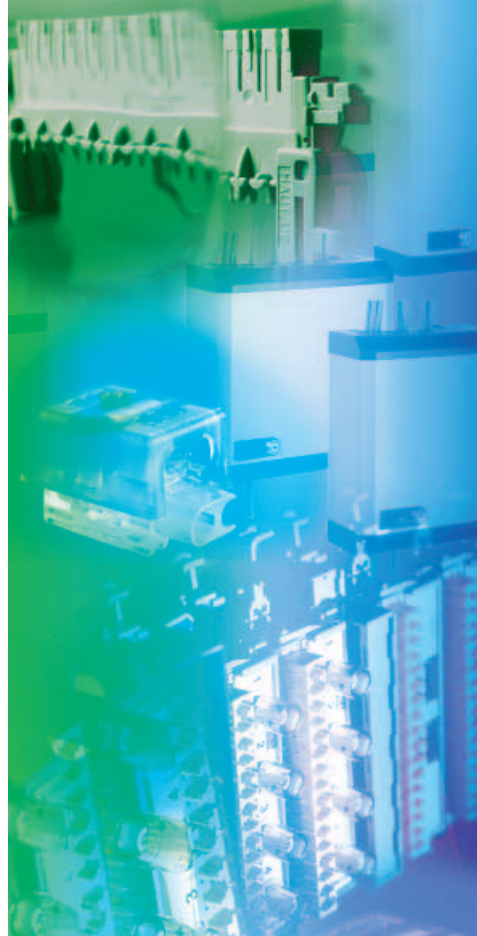


# Solutions for Customer Premise

Solutions for Customer Premise include products ranging from wall distribution to system distribution boxes.

The product range of distribution boxes offers small distribution boxes made of thermoplastic synthetic material (ABS) as well as distribution boxes for surface- and flush-mounting. 3M™ VKA distribution boxes for surface mounting feature a rotating baseplate - FlexiBase - which allows for flexible mounting of SID-CD (DIN design) or SID-C strips. Locking systems are available for access security.

<b>3.1</b>	<b>Internal Distribution Product Range</b>	<b>Page</b>
	<b>3.1.1 Connectors for Distribution Boxes</b>	<b>246 - 248</b>
	Quante™ SID™ - CD	246 - 247
	3M™ STS	248
	<b>3.1.2 Building Distribution Boxes</b>	<b>249 - 259</b>
	3M™ VKK overview	249
	3M™ VKA 3K	250
	3M™ VKA overview	251 - 252
	3M™ VKA 2 to 12/DIN	253
	3M™ VKU	254
	3M™ VKU 2 to 8	255
	3M™ VKU 1/20, 3M™ VKU 1/40	256
	3M™ STB, 3M™ STF	257 - 258
	3M™ CII	259
<b>3.2</b>	<b>Network Interface Devices</b>	
	3M™ NID	260 - 261
	3M™ RP1, 3M™ RP2	262



# 3



## 3.1 Internal distribution product range

### 3.1.1 Connectors for distribution boxes

# Quante™ SID™-CD

#### Description

#### Quante SID-CD screw mounted 10/20 pair connection/disconnection strips

The Quante SID-CD connector is a DIN mounting, screw on connector which, completes the SID product range.

Its main applications are in the small to medium telecommunications data distribution frames and boxes.

The SID-CD strips are available in both connection and disconnection strips for 10 and 20-pair cables.

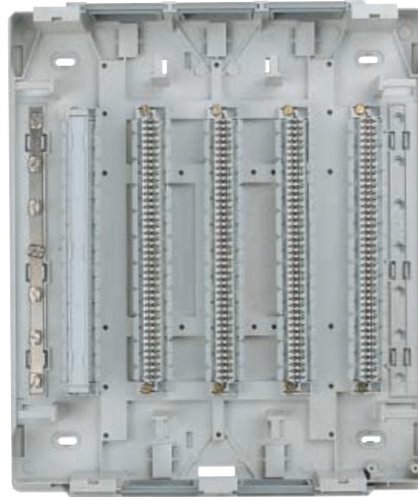
Earth strips for 40 and 80 wires, which consist of two earth connections at the right and left hand sides of the module, complete the SID-CD range.

The strips are screw mounted and can be terminated using the standard SID termination tool.

A complete range of accessories (overvoltage protection on request) allows optimised use of the SID-CD system.

SID-CD earth connection:

Conductor with a wire diameter of 0,4 - 1,4 mm.



#### Highlights:

- One wire per slot 0,4 - 0,8 mm
- Overvoltage protection available as an option
- Available as connection or disconnection strips
- Larger space for jumpering
- Optimized wire guiding
- Supplementary earth connection
- Long-life tools
- Jumpering possible with labelling frame in place

#### Dimensions (L x W x D)

Connection and disconnection strips:

for 10 pair: 106 x 20 x 25 mm

for 20 pair: 179 - 20 - 25 mm

#### Mounting dimension:

**Type A** 10 pair, 96 mm

**Type B** 20 pair, 170 mm

#### Type/Order text

#### Ref.-No.

#### Quante SID-CD 10-pair connection and disconnection strips

##### SID-CD connection modules

Dimensions (LxWxD) 106 x 20 x 25 mm

Color: grey



##### connection strip for 10 pairs

numbered 1...0

black printing

PU: 5 pcs, Weight: 0,35 kg

**79101-559 00**



## 3.1 Internal distribution product range

### 3.1.1 Connectors for distribution boxes

#### Quante™ SID™-CD

##### Type/Order text

##### Ref.-No.

#### Quante SID-CD 10-pair connection and disconnection strips

Dimensions (LxWxD) 106 x 20 x 25 mm  
Color: grey



**SID-CD disconnection modules  
disconnection strip for 10 pairs**  
numbered 1...0  
green printing  
PU: 5 pcs, Weight: 0,25 kg

79103-538 00

#### Quante SID-CD 20-pair connection and disconnection strips

Dimensions (LxWxD) 179 x 20 x 25 mm  
Color: grey



**SID-CD connection modules  
connection strip for 20 pairs**  
numbered 1...0  
black printing  
PU: 5 pcs, Weight: 0,43 kg

79101-571 00



**SID-CD disconnection modules  
disconnection strip for 20 pairs**  
numbered 1...0  
green printing  
PU: 5 pcs, Weight: 0,43 kg

79103-547 00



**SID-CD earthing module  
earthing strip for 80 wires**  
red printing  
PU: 5 pcs, Weight: 0,43 kg

79101-575 00

#### Accessories for Quante SID-CD 20 pairs



**Labelling frame**  
plug-on type for 20-pair strips  
PU: 1 pc, Weight: 0,010 kg

79156-517 00



**Labelling frame**  
plug-on type, for 10-pair strips  
PU: 1 pc, Weight: 0,005 kg

79156-516 00



**Earth connector kit**  
for the 10/20 pair strips; right and left  
PU: 1 pc, Weight: 0,007 kg

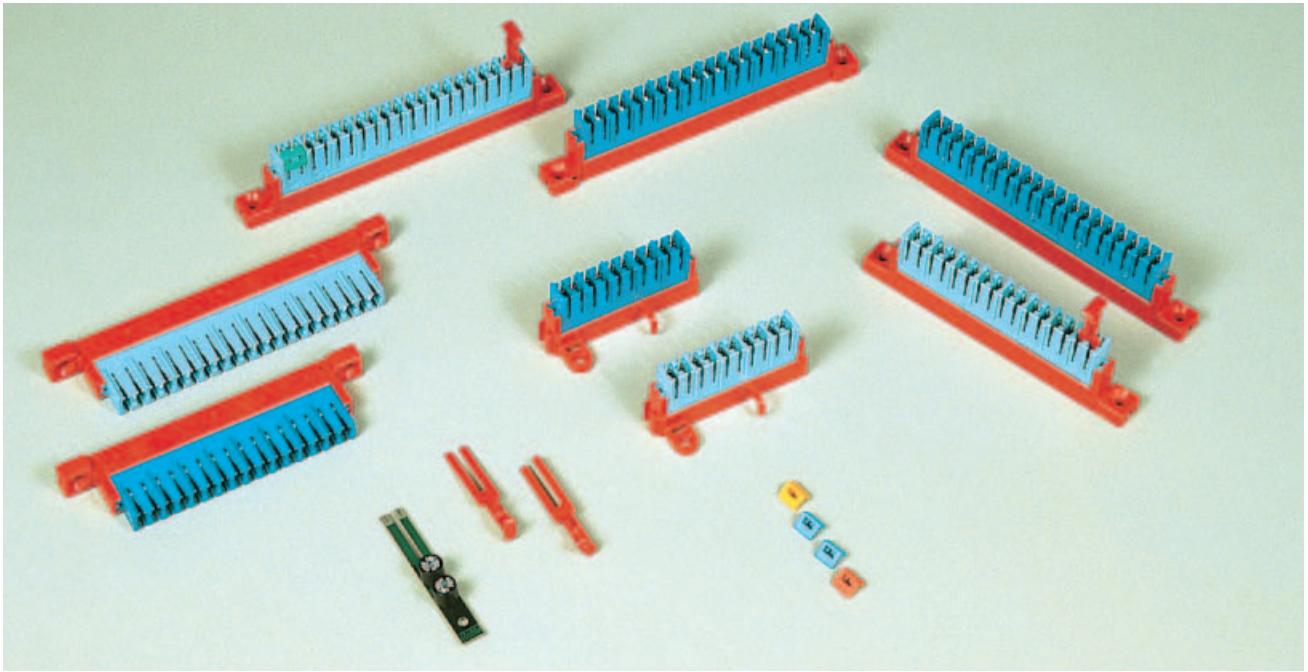
79096-534 00

## 3.1 Internal distribution product range

### 3.1.1 Connectors for distribution boxes

#### 3M™ STS

#### Description



- Connection strips with insulation displacement contacts (IDC) designed for screw mounting to a flat base (wall, box, channel).
- These strips can be screw fitted to any level surface and require no back mount profile or special support.
- The full range of modules comprises the following:
  - Disconnection module (STS C2)
  - STS modules are compatible with all STG accessories
  - To be upgraded with protection STS modules have to be equipped with multipair protection magazines with cord. (Refer to STG protection solutions)
- Extremely compact design 14 mm
  - insulated body in self-extinguishing polycarbonate (V0 rating to standard UL 94).

#### Distance between holes

- 5 pairs: 45 mm
- 8 pairs: 100 mm
- 10 pairs: 120 mm

#### Highlights:

- Category 5
- Compact 14 mm pitch
- 5,8 and 10 pairs
- 0,4 to 0,8 mm wires

#### Type/Order text

#### Ref.-No.

#### Modules with disconnection and test in series facilities



#### disconnection modules

- STS C2**, 5 pairs cat 3
  - STS C2**, 8 pairs cat 5
  - STS C2**, 10 pairs cat 5
  - STS C2**, 10 pairs, marked
- from 1 to 0 cat 5

**MPA0210A0000**

**C223755B0000**

**C223756B0000**

**C223873B0000**

## 3.1 Internal distribution product range

### 3.1.2 Building distribution boxes

#### 3M™ VKK overview

##### Description

#### 3M VKK distribution boxes for 10 - 20 pair Quante SID-CD

VKK distribution boxes for 10 and 20-pair, are a range of empty plastic boxes for use in surface mount indoor applications. Their primary use is for the mounting of SID-CD or DIN connection strips in 'dry room' environments.

Manufactured from thermoplastic synthetic material (ABS) the boxes offer a high degree of impact resistance. Knockouts are provided on all sides of the cover and within the base plate to provide cable inlets / outlets.

Each box is supplied complete with screws for the mounting of component parts. Maximum allowable height of internal components is 38mm.

**Protection Rating: IP31 (EN60529)**

**Colour: RAL 7032, Pebble grey**

**Material: ABS**

##### Possible Configurations

###### VKK 1

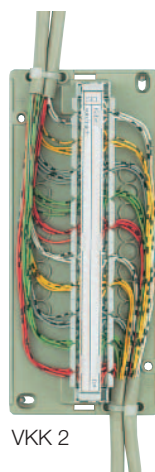
1 component part, hole-spacing 96 mm  
(e.g. 10-pair connection strip SID-CD or type A\*).

###### VKK 2

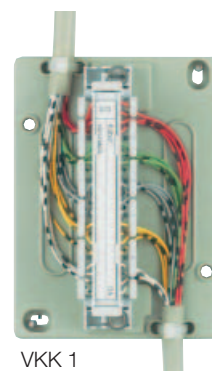
1 component part, hole-spacing 170 mm  
(e.g. 20-pair connection strip SID-CD/10, 20-pair type B\*).

###### VKK 3

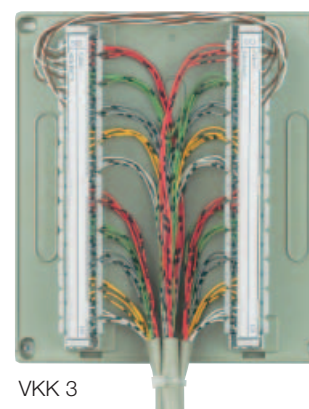
2 component parts, hole-spacing 170 mm  
(e.g. 20-pair connection strip SID-CD/10, 20-pair type B\*).



VKK 2



VKK 1



VKK 3

#### 3M VKK distribution boxes for 20 - 40 pair Quante SID-CD

VKK distribution boxes for 20 and 40-pair, are a range of empty plastic boxes for use in surface mount indoor applications. Their primary use is for the mounting of SID-CD or DIN connection strips in 'dry room' environments.

Manufactured from thermoplastic synthetic material (ABS) the boxes offer a high degree of impact resistance. Knockouts are provided on all sides of the screw-on cover and within the base plate to provide cable inlets / outlets.

Each box is supplied complete with screws for the mounting of component parts, wire guide hooks and cable tie holders.. Maximum allowable height of internal components is 38mm.

**Protection Rating: IP31 (EN60529)**

**Colour: RAL 7032, Pebble grey**

**Material: ABS**

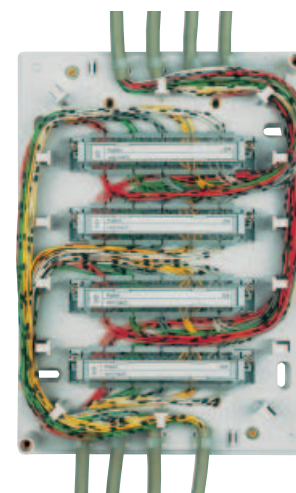
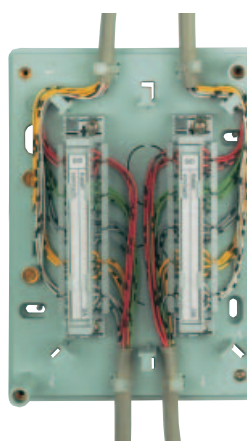
##### Possible Configuration

###### K10/20

2 component parts, hole-spacing 96 mm  
(2 x 10-pair connection strips SID-CD)

###### K10/40

4 component parts, hole-spacing 96 mm  
(4 x 10-pair connection strips SID-CD)



\*) Connection strip according to DIN 47614

## 3.1 Internal distribution product range

### 3.1.2 Building distribution boxes

#### 3M™ VKA 3K

##### Description

#### 3M Distribution box for 100 pair SID-CD

The VKA 3K distribution box is a surface mount empty housing for mounting connection strips in a 'dry room' environment. Manufactured in thermoplastic synthetic material (ABS) the housing offers both high impact and flame resistance.

Each housing includes a screw-on cover and baseplate that include 5 slide in plates with contoured knockouts, (3 in the top and 2 in the bottom). Cable strain relief is also provided at the cable inlet areas.

##### Standard equipment

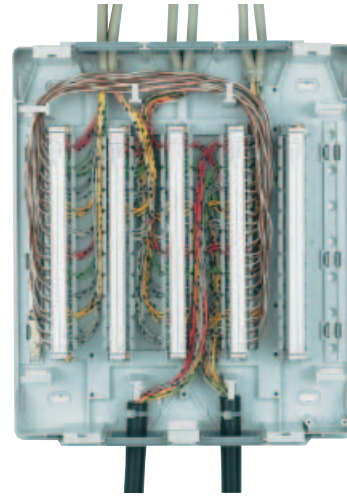
- Wall mounting hardware
- component fixing screws
- wire guiding hooks,
- cable tie holder
- earth bar.

##### Accessories (to be ordered separately):

- "Q2" lock
- monitoring switch
- second earthing bar.

##### Possible Configurations

- Connection strips (hole-spacing 96 mm or 170 mm, respectively), 3 pcs. for 10 or 20 pairs each (screwing and soldering connections).
- Quante SID-CD-strips: 5 pcs. for 10 or 20 pairs each (max. 100 pairs).
- Or other components on the baseplate.



Protection Rating: IP31 (EN60529)

Colour: RAL 7032, Pebble grey

Material: ABS

##### Type/Order text

##### Ref.-No.



##### VKA 3K

PU: 1 pc, Weight: 0,9 kg

50-100-00300

#### 3M VKA 3K Accessories



##### "Q2" lock

PU: 1 pc, Weight: 0,075 kg

50096-505 00

## 3.1 Internal distribution product range

### 3.1.2 Building distribution boxes

#### 3M™ VKA overview

##### Description

#### 3M VKA distribution boxes for 60 - 640 pairs

The VKA distribution boxes are designed to accommodate component parts with a mounting measurement of 170 mm (DIN strips), Quante SID-C, SID-CD, as well as overvoltage protection modules.

The distribution boxes are available in four sizes capable of accommodating from 60 to 480 pairs for DIN strips.

The SID-C system (depending on the housing size) accommodates a maximum of 80 to 640 pairs (recommended capacity: 480 pairs).

The distinguishing feature of this generation of distribution boxes is the rotating baseplate - "FlexiBase".

FlexiBase allows for flexible mounting: SID-CD strips (DIN design) can be mounted on one side, with a back mount frame or FlexiRail for SID-C integrated on the other side. Quante FlexiRail allows for continuously variable module configuration.

"DIN-SID-C" - based on FlexiBase - is offered for VKA 4, VKA 8 and VKA 12.

"DIN-SID-C" stands for combined DIN and SID-C FlexiRail systems in a single housing.

Quante SID-C is optimal where high density is required.

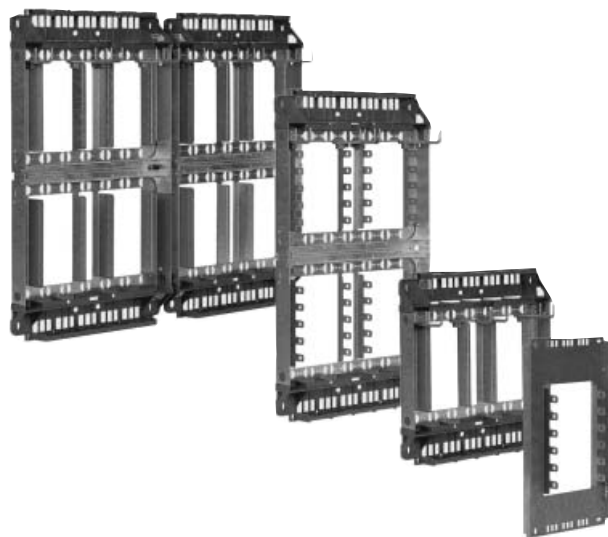
The "DIN" models are suitable for DIN strips (screw and solder connections).

This design concept offers users the possibility to decide between the DIN and frame systems to meet their individual needs for on-site, last-minute installation, without having to buy additional frames. Thanks to the FlexiBase, a quick "turn of the hand" transforms a DIN distributor into a frame distributor for SID-C with FlexiRail.

VKA2 / DIN as well as the "DIN-SID-C" models provide the ultimate solution for mounting SID-C strips even in DIN format (mounting measurement 170 mm). The strips are simply secured to the baseplate by means of special retaining clips without having to be screwed on which is a distinct assembly advantage. Furthermore, the retaining clips can be simultaneously used as wire guide hooks.

Cables are inserted through plastic caps with knockout contours, which are fastened to VKA 4, VKA 8 and VKA 12 mounting profiles and allow easy cover installation and removal in a mounted distribution box.

The distribution boxes are standard equipped with snap locks. Safety locks are a retrofit option.



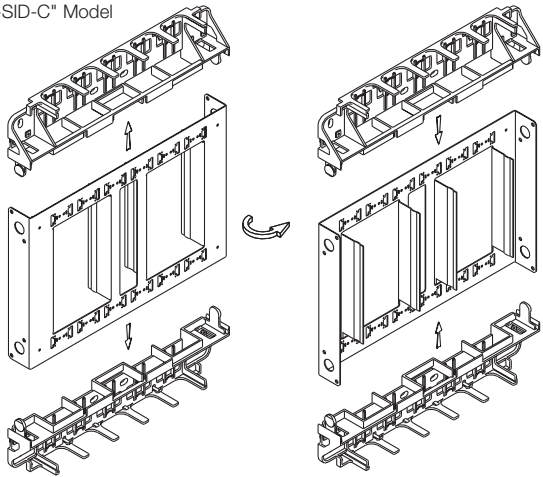
## 3.1 Internal distribution product range

### 3.1.2 Building distribution boxes

#### 3M™ VKA overview

##### Technical characteristics

"DIN-SID-C" Model



##### Models:

- VKA 2 / DIN: Baseplate for DIN component parts
- VKA 2 / SID-C: Baseplate with integrated SID-C FlexiRail

##### VKA 4, VKA 8 and VKA 12 in the following versions:

- DIN: With baseplate for all DIN component
- With FlexiBase for SID-CD (DIN strips) and integrated FlexiRail for SID-C

##### Material:

- Baseplate: Galvanised steel
- Cover: Powder-coated sheet steel with plastic caps.
- Lock: Snap lock; lock kits optional.
- Protection type: IP 40 (EN 60529).

##### Standard equipment

- Baseplate with integrated SID-C FlexiRail.
- Retaining clips / wire guide hooks for DIN models with Flexibase and VKA 2 / DIN; wire guide hooks for SID models; ground terminals.

Capacity/Max. Connections [pairs]  
DIN SID-C

	DIN	SID-C
VKA 2 / DIN	60	—
VKA 2 / SID-C	—	80
VKA 4 / DIN	120	160
VKA 8 / DIN	240	320
VKA 12 / DIN	480	(max.) 640 (recom.) 480

##### Type/Order text

##### Ref.-No.

#### Locking system for 3M VKA distribution boxes

##### Q2 lock kit for VKA 4, VKA 8 and VKA 12

Weight: 0,5 kg

52096-522 00

##### Q3 lock kit for VKA 4, VKA 8 and VKA 12

Weight: 0,5 kg

52096-520 00

##### Q2 lock kit for VKA 2

Weight: 0,2 kg

52096-523 00

##### Q3 lock kit for VKA 2

Weight: 0,2 kg

52096-521 00

##### Monitoring switch

Cover contact applicable only in conjunction with lock kit.

Weight: 0,05 kg

52096-519 00



## 3.1 Internal distribution product range

### 3.1.2 Building distribution boxes

#### 3M™ VKA 2 to 12/DIN

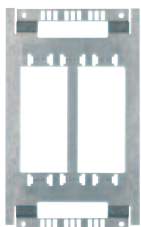


#### Type/Order text

#### Ref.-No.

#### 3M VKA distribution boxes for 60 - 640 pairs

Dimensions (H x W x D)  
330 x 200 x 100 mm

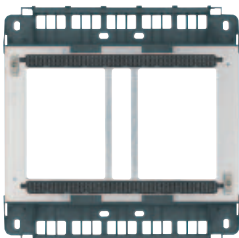


#### VKA 2 / DIN

Optional configurations:  
- 2 strips of 20 pairs (screw/solder type)  
- 3 strips 20 pairs SID-CD  
Use of overvoltage protection possible  
PU: 1 pc, Weight: 1,7 kg

52-300-00000

330 x 330 x 125 mm

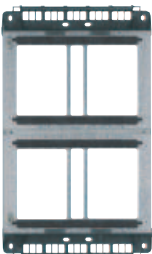


#### VKA 4 / DIN

Optional configurations:  
- 4 strips of 20 pairs (screw/solder type)  
- 6 strips 20 pairs (SID-CD)  
- 16 strips 10 pairs (SID-C)  
Use of overvoltage protection possible  
PU: 1 pc, Weight: 2,8 kg  
For use with SID-C please order 2x wire guide hooks  
SID-C per distribution box

52-302-00100

550 x 330 x 125 mm

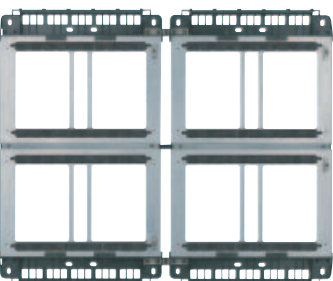


#### VKA 8 / DIN

Optional configurations:  
- 8 strips of 20 pairs (screw/solder type)  
- 12 strips 20 pairs (SID-CD)  
- 32 strips 10 pairs (SID-C)  
Use of overvoltage protection possible  
PU: 1 pc, Weight: 4,9 kg  
For use with SID-C please order 4x wire guide hooks  
SID-C per distribution box

52-302-00200

550 x 665 x 125 mm



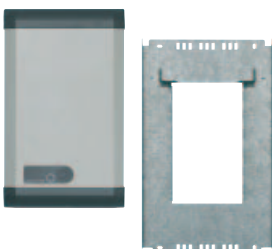
#### VKA 12 / DIN

Optional configurations:  
- 16 strips of 20 pairs (screw/solder type)  
- 24 strips 20 pairs (SID-CD)  
- 64 strips 10 pairs (SID-C)  
Use of overvoltage protection possible  
PU: 1 pc, Weight: 9,2 kg  
For use with SID-C please order 8x wire guide hooks  
SID-C per distribution box

52-302-00300

Wire guide hooks SID-C

52096-533 00



#### VKA 2 / SID-C

8 strips of 10 pairs (SID-C)  
Use of overvoltage protection possible  
PU: 1 pc, Weight: 1,7 kg

52-300-00025

## 3.1 Internal distribution product range

### 3.1.2 Building distribution boxes

# 3M™ VKU

#### Description

#### 3M VKU flush mounted distribution boxes

VKU distribution boxes are a range of housings designed for flush mount applications.

Available in various materials and sizes to suit individual requirements.

VKU 2 to 8

Housing: Sheet steel, coated with stove-enamel.

Colour: RAL 7032, pebble-grey.

Cable insertion: Plastic inserts with knockout contours.

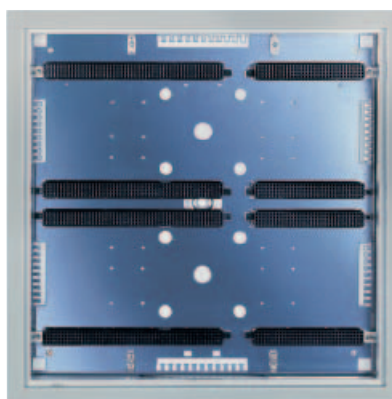
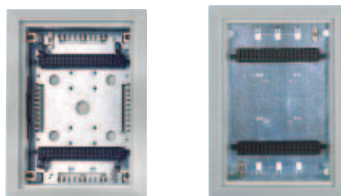
Lock: Catch type lock; safety lock as accessory.

Protection rating: IP 42 (EN 60529), depending on component specifications.

Max. allowable height of fitted component parts:  
33...58 mm (depending on underplaster depth).

#### Standard equipment

- Flush-mounting box with plastic inserts
- ground terminals, fastening bars
- wire guide rings
- plaster compensation frame and door with designation cards and fasteners
- Screws for fastening connection strips.



#### Technical characteristics

#### Installation capacities

Components with mounting measurement 170 mm	VKU 2	VKU 4	VKU 8
Form B connection strip	2	4	8
SID-CD 20 pairs	3	5	10

## 3.1 Internal distribution product range

### 3.1.2 Building distribution boxes

#### 3M™ VKU 2 to 8



#### Type/Order text

#### Ref.-No.



**VKU 2**  
356 x 256 x 87 mm  
Wall opening  
(HxWxD): 310 x 210 ≥ 80 mm  
PU: 1 pc, Weight: 3 kg

51-700-10200



**VKU 4**  
356 x 356 x 87 mm  
Wall opening  
(HxWxD): 310 x 310 ≥ 80 mm  
PU: 1 pc, Weight: 4,6 kg

51-700-10400



**VKU 8**  
556 x 356 x 87 mm  
Wall opening  
(HxWxD): 510 x 310 ≥ 80 mm  
PU: 1 pc, Weight: 6,2 kg

51-700-10800

## 3.1 Internal distribution product range

### 3.1.2 Building distribution boxes

#### 3M™ VKU 1/20, 3M™ VKU 1/40

##### Description

#### 3M VKU 1/20

**Housing, frame and cover:**

Thermoplastic synthetic material (ABS), impact-resistant.

Colour: RAL 1013, pearl-white.

Perforated sheet base: Steel, chromed.

Cable insertion: Knockout markings on all sides of the flush-mounting box.

Protection rating: IP 31 (EN 60529).

**Standard equipment**

- Flush-mounting box with perforated sheet base for installing component parts with self-tapping screws.

- Plaster compensation frame (adjustable to max. 10 mm) with cover insert.

**Optional configuration:**

1 connection strip, mounting measurement 96 mm

(2 fitting angles with screws to be ordered separately).



#### 3M VKU 1/40

**Housing, frame and cover:**

Sheet steel, stove-enamel finish.

Colour: RAL 7032, pebble-grey.

Cable insert: flush-mounting box with plastic elements inserted above and below and knockout markings left and right.

Protection rating: IP 31 (EN 60529).

**Standard equipment**

- Flush-mounting box with perforated sheet base for mounting component parts with self-tapping screws.

- 4 fitting angles with screws

- 2 clamps for ground lead

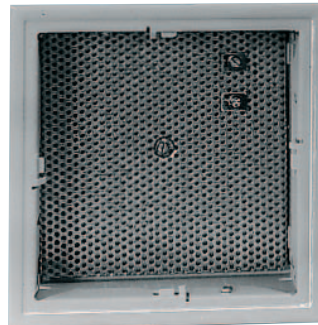
- Plaster compensation frame (adjustable to max. 12 mm)

- Vover with sash lock

- Slide-in inside inscription plate.

**Optional configuration:**

Max. 2 connection strips, fitting measurement 96 mm.



##### Type/Order text

##### Ref.-No.

**VKU 1/20**

Flush-mounting

PU: 1 pc, Weight: 0,17 kg

53-000-001 00

**Fastening angle**

Component fastening angle in VKU 1/20

(not illustrated)

PU: 1 pc, Weight: 0,03 kg

53164-500 00

**VKU 1/40**

Flush-mounting

PU: 1 pc, Weight: 1 kg

51-004-05100

**Q3 Lock**

52323-508 25



## 3.1 Internal distribution product range

### 3.1.2 Building distribution boxes

#### 3M™ STB, 3M™ STF

#### Description

#### 3M STB - 3M STF indoor distribution boxes

The range of indoor distribution boxes is composed of complete boxes with connection modules (STB) and boxes to be equipped with STG connection modules (STF)

These boxes are suitable for all indoor applications and the cover can be removed from the base with 1/4 turn captive screws. Built in impact resistance polystyrene the protection class is IP 41, standard colour is RAL 9001 (cracked white). The box is designed to be mounted with 4 screws (not supplied).

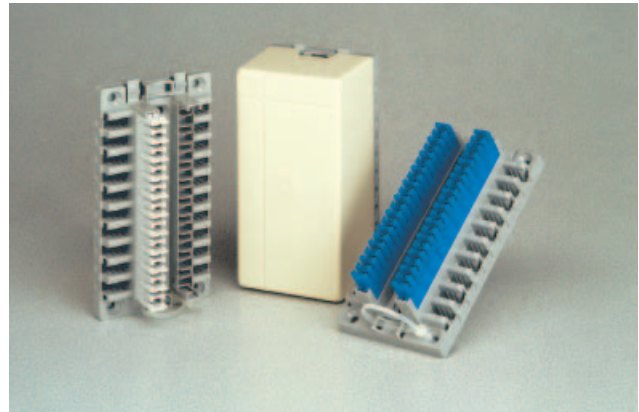
On STF boxes and STB (30, 40, 50 pairs) each side of the box is made up of a sliding panel which can be removed. This allows for several boxes to be installed side by side with jumpers routed from one box to the other. A valuable feature when extending the number of lines in an installation.

#### STB fully equipped boxes

- STB 10 and 20 pairs:  
Compact boxes with lockable cover, based on STG IDC technology. The multipair cable is routed through the centre of the box with the distribution cables exiting through the side or the rear of the box. A specific high depth cover allows to install multipair protection magazines.
- STB 30, 40 and 50 pairs:  
STF boxes equipped with STS screw mount disconnection modules.

#### STF empty box for STG connection modules

- STF is available in two box sizes, 100 and 200 pairs.  
Provision is made to mount STG modules on an internal backmount frame with earth post
- The box is delivered complete with cable ties.



#### Dimensions and capacities of the STF backmount frame

Description	Dimensions (mm)			Capacities	
	H	W	D	Fixing	STG base 10
Box STF B10 x 1 step	16	112	35	2 x Ø 4	1
Box STF B10 x 2 step	32	112	35	2 x Ø 4	2
Box STF B10 x 3 step	48	112	35	2 x Ø 4	3
Box STF B10 x 6 step	96	112	35	4 x Ø 4	6
Box STF B10 x 11 step	176	112	55	4 x Ø 4	11
Box STF B10 x 21 step	336	112	55	8 x Ø 4	21

#### Dimensions and capacities of the STF boxes

Description	Dimensions (mm)			Capacities		
	H	W	D	STG base 8	RCP	STG base 10
Box STF 80	210	175	121	10	10	
Box STF 160	350	210	121	20	20	
Box STF 160	210	175	121			10
Box STF 160	350	210	121			20

#### Highlights:

- Possibility to install the boxes along each other
- Comprehensive range
- STG connection technology

#### Dimensions of the STB boxes

Description	Dimensions (mm)		
	H	W	D
STB, 10 pairs	130	66	55
STB, 20 pairs	130	66	55
STB, 30 pairs	210	175	121
STB, 40 pairs	210	175	121
STB, 50 pairs	210	175	121

## 3.1 Internal distribution product range

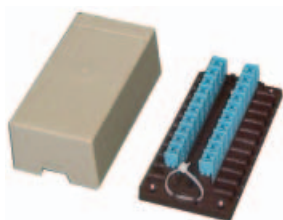
### 3.1.2 Building distribution boxes

#### 3M™ STB, 3M™ STF

##### Type/Order text

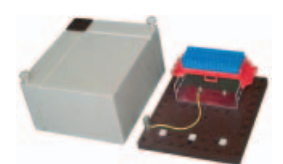
##### Ref.-No.

#### Box with connection modules



**Compact box for 10 and 20 pairs**  
 10 pair disconnection box **STB C2 10**  
 20 pair disconnection box **STB C2 20**

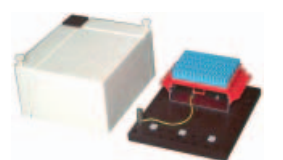
**C227322A0000**  
**C227323A0000**



**Compact box for 10 and 20 pairs with protection options**  
 10 pair connection box **STB S2 10 P**  
 20 pair connection box **STB S2 20 P**  
 10 pair disconnection box **STB C2 10 P**  
 20 pair disconnection box **STB C2 20 P**  
**10 pair protection magazine for STB boxes with earth cord**  
 (not equipped with surge arresters)  
**Three poles surge arresters for STB protection magazine**

**C227367A0000**  
**C227368A0000**  
**C227336A0000**  
**C227337A0000**  
**C233888A0000**

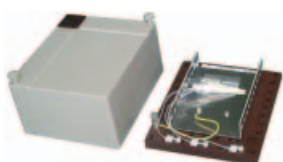
refer to STG protection



**Medium box 30, 40 and 50 pairs**  
 equipped with STS connection modules  
 30 pair disconnection box **STB C2 30**  
 40 pair disconnection box **STB C2 40**  
 50 pair disconnection box **STB C2 50**

**C227342B0000**  
**C227344B0000**  
**C227346B0000**

#### 3M STF empty boxes equipped with Quante STG backmount frame



**Medium and large size boxes STF for 8 pair STG modules**  
**80 pair medium STF box**  
 10 way STG 8 pair backmount frame

**C226020A0000**

**160 pair large STF box**  
 20 way STG 8 pair backmount frame

**C226021A0000**



**STF for 10 pair STG modules**  
**100 pair medium STF box**  
 10 way STG 10 pair backmount frame

**C226022A0000**

**200 pair large STF box**  
 20 way STG 10 pair backmount frame

**C226023A0000**

**Backmount frames for STF boxes**  
 Additional backmount frames can be used to configure STF boxes with other capacities

for STG 10 pairs (H 35)

**Set of 2 x 1 way backmount frame**  
**Set of 2 x 2 way backmount frame**  
**Set of 2 x 3 way backmount frame**  
**Set of 2 x 6 way backmount frame**

**C226000A0000**  
**C226001A0000**  
**C226002A0000**  
**C226003A0000**



for STG 10 pairs (H 55)

**Set of 2 x 11 way backmount frame**  
**Set of 2 x 21 way backmount frame**

**C226004A0000**  
**C226005A0000**



## 3.1 Internal distribution product range

### 3.1.2 Building distribution boxes

#### 3M™ CII

#### Description

#### 3M CII flush/wall mount indoor boxes

Compact indoor distribution box for flush and wall mount applications. The low depth allows the use of the box in most indoor applications.

The cover is hinged and is secured by a triangular shaped lock.

The box offers provision for 25 pairs ( 5 x STS disconnection modules of 5 pairs each) When used without the earth post the capacity can accommodate 6 x STS modules, e.g 30 pairs.

Cable inlets can be setup on site (pre-drilled entries) and accommodate cables up to 12 mm overall diameters.

CII is built in self extinguishing ABS.

#### Highlights:

- Very compact indoor box
- Flush and wall mount
- Flexible capacity from 5 to 30 pairs



#### Type/Order text

#### Ref.-No.

#### Boxes

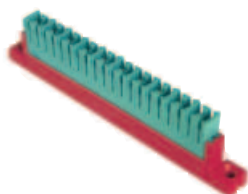
**25 pair box for flush/surface mounting**, empty with earth post

**MPA0390A**

**25 pair box for surface mounting only**, empty with earth post

**MPA039BA**

#### Accessories



**Disconnection Module, 5pairs, cat.3, type STS C2**

**MPA 0210A0000**

**SOR OC Multipurpose insertion tool**

**C234030A0000**

## 3.2 Network interface devices

### 3M™ NID

#### Description



NID is the last termination point between customer premises and outside plant. The 2 connection points are clearly separated to allow an independent termination at different times. Additional functions such as disconnection, test, protection and line remote testing are also included in the NID.



Based on MX gel-filled screwdriver operated IDC technology, NID can accommodate all kinds of existing dropwires (0,5 to 1,1 mm conductor diameter whatever the core materials is).

The MX connectors self healing gel provides an outstanding protection against moisture and dust ingress. As a result, NID is fully watertight even after multiple reterminations.

Subscriber termination is designed around the Quante-Pouyet tool free IDC system which can be terminated by the subscriber himself. Double slotted contacts allows to T-connect from the NID.

As the customer termination point, NID offers a reliable surge protection for the complete subscriber telephone line. Therefore NID is equipped with a watertight housing for a three pole surge arrester with fail safe. The drain current capacity between line and earth is 10 kA as a high surge current may be carried out through large diameter drop wires. Protection is maintained on the drop wire side when line is disconnected. This built-in protection design allows easy replacement of the surge arrester without additional expenses.

A free internal volume is available to accommodate any parallel RC circuit for the line's continuity remote test purposes. As a result the whole line's continuity can be automatically tested from the exchange. This facility is useful to check if the line's fault is originating from the network side or from the subscriber side.

#### Highlights:

- Integrated product
- Fully watertight
- Tool free termination system on subscriber side
- Built-in protection
- Accommodates all existing drop wires
- Compact and sturdy design
- Remote test circuit location
- 10 kA protection with earth connection



## 3.2 Network interface devices

# 3M™ NID



### Technical characteristics

**Electrical**

Leading through resistance: < 50 MΩ  
Dielectric strength: 3 000 V DC/1 minute  
Insulation resistance: > 10 000 MΩ  
Current flow capacity for protected version: 10 kA

**Material**

UV protected and self-extinguishing PVC  
Bronze, tin-lead plated contacts

**Protection rating**

IP 43 (EN 60 529)

**Operating temperature**

-30°C to +70°C

**Dimensions**

Width 70 mm  
Length 81 mm  
Depth 32 mm

**Connection**

Internal cable (subscriber side)  
Copper conductor: from Ø 0,4 to 0,65 mm  
(AWG 26 to AWG 22)  
Overall insulation diameter: Ø 1,5 mm  
Dropwire (network side)  
Steel or copper dropwires  
Conductor diameter: from Ø 0,5 to 1,1 mm  
(AWG 24 to AWG 18)  
Overall insulation diameter: Ø 4,7 mm

### Type/Order text

**Network Interface Device for protection**

(three-pole surge arrester is not supplied)

**Ref.-No.**

C246806A0000

**Network Interface Device with protection,**

250 V three-pole surge arrester

C246805A0000

**Network Interface Device**

(without protection facilities)

C246809A0000

## 3.2 Network interface devices

# 3M™ RP1, 3M™ RP2

### Description

#### 3M RP1-3M RP2 subscriber termination unit

The 3M RP range consist of 2 types of boxes for customer connection to the outside plant. The boxes can be equipped with either 1 or 2 MX connectors for connection to outside plant.

2 versions of box are available, the standard box with sliding cover (RP1) and a box with hinged cover (RP2).

Made of UV resistant self-extinguishing thermoplastic material these boxes are suitable for external applications.

Each box includes strain relief devices to attach incoming cables as well as a rubber gasket to protect against insects and environmental conditions.

Both types are equipped with an earth post as the overvoltage protection is provided at the network termination unit.

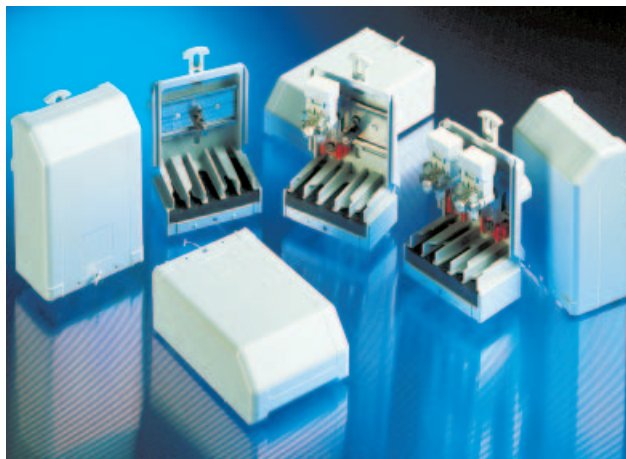
The RP2 box (hinged cover version) comes with a screw type lock.

The RP1 box (sliding cover version) can be pole (screws or steel strap) or wall mounted.

RP2 is only designed for wall mounting applications.

#### Highlights:

- 2 boxes available
- MX high reliability connection
- Weather proof design
- Earth termination facility
- Cable ties and cable gland gasket



### Type/Order text

### Ref.-No.

#### Standard equipment

box with mounting rail and earth post  
with gasket and strain relief devices.

#### RP1 - 2 pair box with sliding cover

Empty box

#### RP2 - 2 pair box with hinged cover

Empty box

NN3450730000

C227358A0000